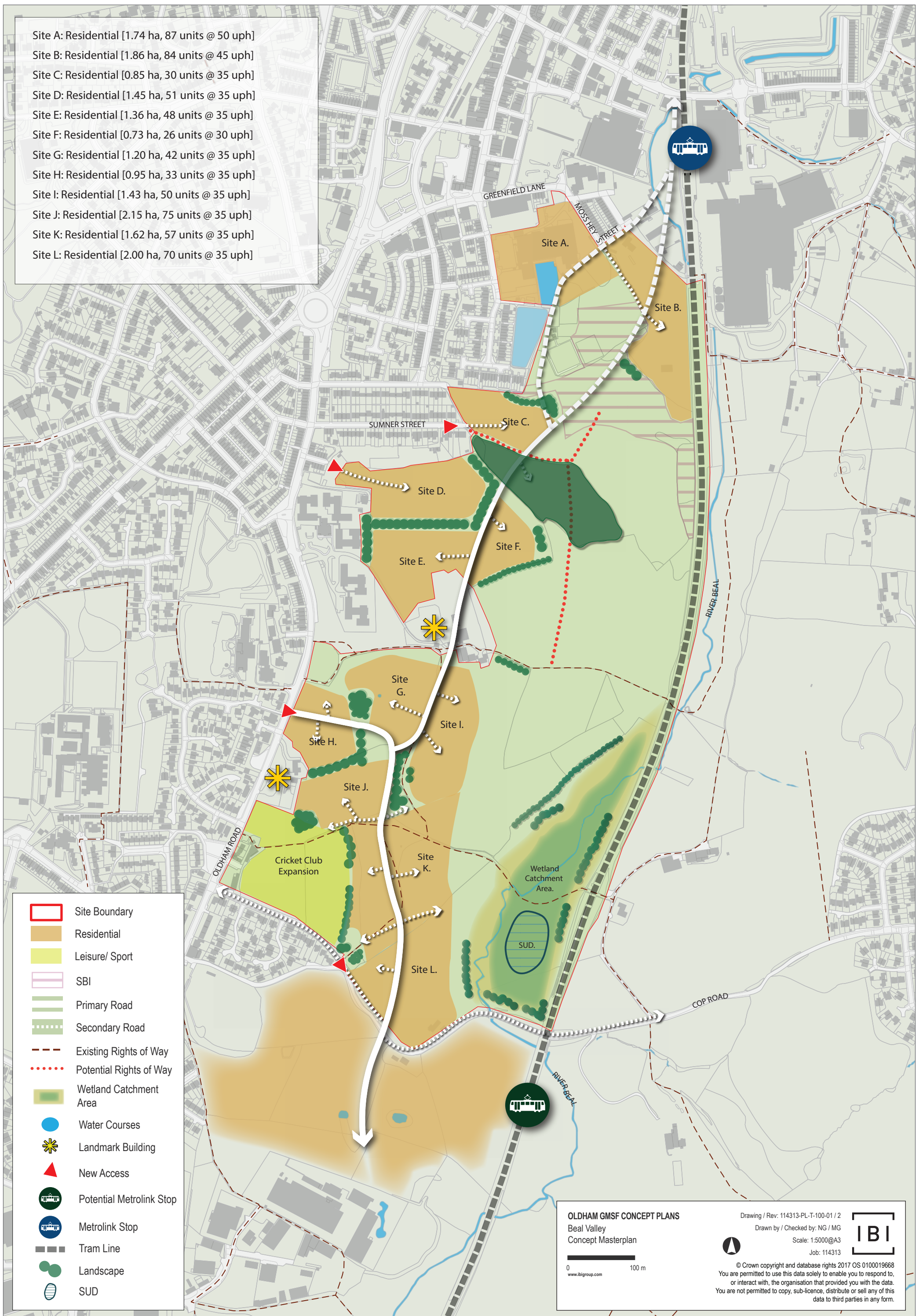


- Site A: Residential [1.74 ha, 87 units @ 50 uph]
- Site B: Residential [1.86 ha, 84 units @ 45 uph]
- Site C: Residential [0.85 ha, 30 units @ 35 uph]
- Site D: Residential [1.45 ha, 51 units @ 35 uph]
- Site E: Residential [1.36 ha, 48 units @ 35 uph]
- Site F: Residential [0.73 ha, 26 units @ 30 uph]
- Site G: Residential [1.20 ha, 42 units @ 35 uph]
- Site H: Residential [0.95 ha, 33 units @ 35 uph]
- Site I: Residential [1.43 ha, 50 units @ 35 uph]
- Site J: Residential [2.15 ha, 75 units @ 35 uph]
- Site K: Residential [1.62 ha, 57 units @ 35 uph]
- Site L: Residential [2.00 ha, 70 units @ 35 uph]



- Site Boundary
- Residential
- Leisure/ Sport
- SBI
- Primary Road
- Secondary Road
- Existing Rights of Way
- Potential Rights of Way
- Wetland Catchment Area
- Water Courses
- ✱ Landmark Building
- ▲ New Access
- Potential Metrolink Stop
- Metrolink Stop
- Tram Line
- Landscape
- SUD

**OLDHAM GMSF CONCEPT PLANS**  
 Beal Valley  
 Concept Masterplan

Drawing / Rev: 114313-PL-T-100-01 / 2  
 Drawn by / Checked by: NG / MG  
 Scale: 1:5000@A3  
 Job: 114313

© Crown copyright and database rights 2017 OS 0100019668  
 You are permitted to use this data solely to enable you to respond to,  
 or interact with, the organisation that provided you with the data.  
 You are not permitted to copy, sub-licence, distribute or sell any of this  
 data to third parties in any form.

0 100 m  
 www.ibigroup.com

**IBI**